

2024

Annual Report





A Message from the Crawford Heritage Community Foundation

After more than 25 years of service, the community foundation continues to grow, strengthened by trust, generosity, and a shared vision for Crawford County's future. What began as a volunteer-led effort has become a well-established institution, focused on long-term impact.

Thanks to your support, 2024 was a year of momentum. We received meaningful charitable gifts, welcomed new funds, and increased the reach of our grantmaking. Today, we manage 173 endowed funds and have distributed more than \$17 million in grants since 1998, benefiting 168 local organizations, scholarships, and charitable purposes.

In this report, you'll see:

- How donor generosity turned into real impact
- How we steward investments to grow support over time
- Highlights from *Crawford Gives*, which raised more than \$900,000 in 72 hours, plus an additional \$44,000 in match funds; all directed back into our community

Our mission is simple: connect people who care with causes that matter. Whether you give to a specific nonprofit, support a cause like education or the environment, or trust us to direct your gift where it's needed most, your generosity makes a lasting difference—each and every year, forever.

We are grateful for every gift; large or small, immediate or planned. If you're considering a legacy gift, we invite you to join our *Dwight Haas Bequest Society* and become part of the foundation's future.

Thank you for believing in our work and helping us build a stronger Crawford County. We're honored to be your partner in giving.

With appreciation,

The Crawford Heritage Community Foundation Team



Christian Maher, Executive Director

About Us

The Crawford Heritage Community Foundation is dedicated to making Crawford County, Pennsylvania a better place to live, learn, work and raise a family. We help people make the most of their philanthropy by giving to endowed funds. Grant awards are made from these funds to support the causes our donors care about as well as worthwhile programs we select. We manage more than 170 funds, which benefit more than 160 different organizations, scholarships and charitable purposes. More than \$17 million has been awarded since our establishment in 1998.

Meet Our Team



CHRISTIAN MAHER
EXECUTIVE DIRECTOR

Leads the foundation's vision and strategy, strengthens community partnerships, and ensures we remain a trusted resource for charitable giving in Crawford County.



AMANDA CHAPEL
PHILANTHROPIC SERVICES COORDINATOR

Connects donors with meaningful giving opportunities, manages fundholder relationships, and helps turn generosity into long-term impact.



GEORGETTE BENNETT
OPERATIONS DIRECTOR

Keeps the foundation running smoothly, managing logistics, communications, and day-to-day functions that support our mission and our donors.

Are you ready to make a difference?

You look around our community and you want to make a difference. So do we. When we work with people like you, lives change & communities change. When the power of collective philanthropy is leveraged locally, big things start to happen. If you're ready to be a part of this powerful collective philanthropy movement, we're here to guide you as you consider your philanthropic gift, passions, and focus.

A Vibrant Form of Philanthropy

The Crawford Heritage Community Foundation is one of more than 700 community foundations in the United States. Together, community foundations comprise the fastest growing form of philanthropy in the nation.

Stewardship

Over the last five years we have grown by more than \$14 million. That is an average of \$2.8 million in gifts and investment returns each year. We closed the books on 2024 with \$39,022,497.69 in assets under management. This was an increase of 12.61% from year-end 2023 when we had \$34,651,936.32.

We have investment management relationships: 1865 Wealth Advisors, First National Bank of Pennsylvania, Northwest Bank, PNC Bank, and RBC Wealth Management. We also have traditional commercial banking with ErieBank, Marquette Savings Bank, Mercer County State Bank, and PNC. Each institution maintained compliance with our Administrative and Spending Policies and Operating Procedures.

Annual Audit

We complete a yearly audit to meet regulatory requirements and to demonstrate our financial integrity to the community. Our year-end financial statements for 2024 were audited by McGill, Power, Bell & Associates, LLP.

The auditors' opinion was that our financial statements presented fairly, in all material respects, the financial position of the Crawford Heritage Community Foundation. This is the highest level of assurance that an auditor can provide. The audit and our IRS Form 990 are available for review on our profile at Guidestar.org.

We achieved the Gold Transparency seal from Guidestar for 2022 in recognition of our commitment to actively sharing details about our finances and operations.

Market Value as of December 31, 2024

	Fund Balance
Area of Interest Funds	946,552.00
Crawford Heritage Community Foundation Unrestricted Fund	2,067,354.96
Donor Advised Funds (Endowed)	11,008,129.80
Donor Advised Funds (Non-Endowed)	381,536.77
Donor Designated Funds	13,165,539.51
Organizational Endowments	3,434,948.19
Scholarship Funds	7,757,670.35
Charitable Remainder Trusts	260,766.11
Total Under Management	\$39,022,497.69

“Building” a Nonprofit Hub

Since 2014, the Crawford Heritage Community Foundation has maintained offices in a building owned by the Meadville Public Library at 411-415 Chestnut Street. Built in 1979, it was originally home to the Barco Law Office on the first floor. The second floor served as the residence for George J. Barco and his wife Emmaline and their adult daughter, Yolanda.

In 2023, we were approached by the Meadville Public Library with an offer to purchase the property. Recognizing an opportunity to create a hub that could support the region’s nonprofit organizations, our Board of Directors voted to purchase the property. A generous donor offered a gift to underwrite the cost of the purchase shortly thereafter. We established CHCF Holdings, a wholly owned limited liability corporation, through which to manage the property.

The United Way of Western Crawford County and French Creek Valley Conservancy have been headquartered here for several years. They continue to be tenants. Women’s Services has located their Summit Counseling program in the building as well. We also have room for an additional nonprofit tenant.

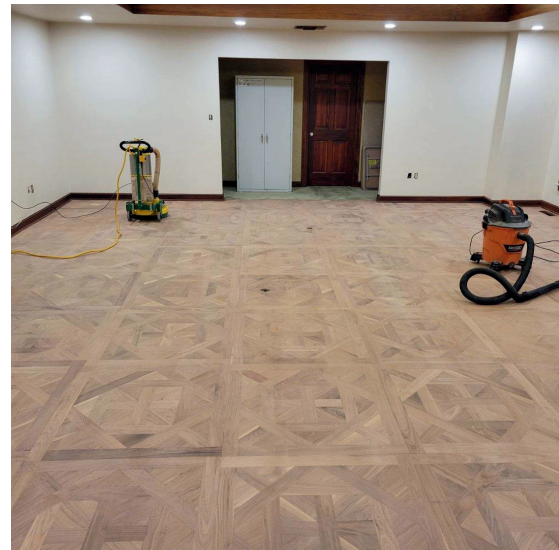


“Building” a Nonprofit Hub (cont.)

We’ve initiated maintenance and renovations to modernize and improve the property, including:

- Window and door replacement and lighting upgrades to improve energy efficiency.
- Refinished second-floor atrium parquet floors.
- Installation of new cubicles and upgraded workstations.
- Upgraded wireless internet across the building.
- Ongoing masonry work including chimney repairs and repointing damaged bricks.
- Fully furnished our first-floor conference room for hybrid use with new tables, chairs, and an advanced video conferencing system.

These renovations reflect our mission in action: being responsible stewards of our resources, increasing our reach, and investing in the future of philanthropy in Crawford County.



Giving Back

In 2024, we received gifts from 1,602 individual people, couples and families who gave \$3,196,103.60 to establish new funds, add to fifty-five existing funds and pass-through gifts to 181 organizations through Crawford Gives.

New Funds

Six new permanent endowment funds were established. Each and every year forever, a percentage of their value will be paid out as grants. More money is granted as the endowments grow. One donor designated fund, two area of interest funds, two organizational endowments, and one scholarship were created. Additionally, three non-endowed funds were created.

Scholarship

Donors can create a scholarship fund and may dictate criteria for the recipients such as financial need, field of study, or academic merit. Lew and Peggy Schaff Scholarship Fund was established with a bequest from the estate of Lew Schaff. It provides an annual award to a selected graduate of Cochran Junior Senior High School who is pursuing a degree in music.

Donor Designated

Donors who establish designated funds identify specific organizations or programs which are to consistently receive grants from their fund. The Thomas M. Redmond And Dorothy L. Redmond Fund was established with a bequest from the estate of Thomas Redmond. It benefits the Conneautville Cemetery Association, Crawford County Humane Society, Evergreen Cemetery Association, Fellows Club Volunteer Fire Department and Ambulance Service, Pierpont Fire Department, Stone Memorial Library, and Yolanda G. Barco Oncology Institute.

Organizational Endowment

Organizational endowments provide for the ongoing support of the non-profit agency for which they were established. The Hatch Cemetery Association Endowment was created to provide for the maintenance of that cemetery, located in Randolph Township. The Second Harvest Food Bank of Northwest Pennsylvania Organizational Endowment provides a source of permanent support for the mission of Second Harvest Food Bank.

Area of Interest

Donors identify broad areas of interest to them (for example, arts, education or youth) toward which we direct funding. The Harold Matthews Fund was established with a bequest from the estate of Harold Matthews. It will provide annual funding for discretionary grants to programs and projects that impact the greater Titusville region. The Kebort Cemetery Fund was established to provide funding for maintenance and upkeep of the Kebort Cemetery in Union Township.

Donor Advised

Donor advised funds are a flexible option for people who may wish to vary their charitable giving recommendations from year-to-year. The donor recommends grants to favorite charities and causes while we provide expert advice, verify the charitable nature of the organizations, write the checks and manage all tax, legal, and accounting matters. These funds can be endowed or non-endowed. Endowed funds grant a set percentage of the fund total each year. Non-endowed funds may be spent down completely if the donor wishes. The Jeremy J. Gebhart Fund will award Jeremy J. Gebhart, MD Senior Scholarships and make grants to organizations selected by the Gebhart family. The Jonathan E. Helmreich Fund and Richard A. Friedberg Fund will make grants to nonprofit organizations selected by their respective donors.

Giving Back

The generous people who established the funds we manage were thinking ahead when they gave away their money. They had the foresight to create a permanent endowment as a gift to present and future generations. Their funds benefit specific organizations, areas of interest and scholarships. Many have also allowed us to decide how to use the money with a gift towards our Unrestricted Fund. We give back to our community with grants from these funds. We have distributed more than \$17 million since 1998. Scholarships and grants disbursed last year totaled \$1,979,599.74. These grants are detailed in the following pages.

Discretionary Grants

Most of our funds have specified beneficiaries who are to receive grants each year. However, we have the discretion to choose how the money is spent from eight of our funds. We consider this to be the most interesting part of our work because we can direct money where it is most needed. We prioritize giving to improve upon the effectiveness of existing programs and support projects that incorporate preventative or curative approaches to the problems and challenges of our community.

Grants from the Crawford Heritage Community Foundation Unrestricted Fund and Ben Franklin Trust support projects in all parts of Crawford County. Titusville-area projects are financed from the Titusville Fund and the Fred Lintner Fund. Programs for children and youth receive support from the Bernadene R. and John B. Cooley Fund. Grants from the Marian and Vincent Barsch Fund support cemetery preservation projects throughout Crawford County. Faith-based and religious programs in the Titusville-area may apply for funding from the Albert L. Carlson Fund. The Wayne A. and Jessie B. Stainbrook Fund supports agricultural, environmental, and conservation programs, as well as youth education in those areas.

We administered one round of discretionary grantmaking in 2024. We were able to give \$92,285 to 49 nonprofits.

“Our donors empower us to use the money they give to respond to our community’s needs in a caring and helpful way. We honor their trust by supporting projects that improve people’s lives both directly and indirectly. These grants help uplift children, protect the environment and make other improvements to our region,” said Christian Maher, Executive Director.



Giving Back (cont.)

The Academy Theatre used \$2,000 for costumes for their production of the musical Anastasia in order to continue providing professional quality entertainment to the region.

The Cambridge Revitalization Economic and Tourism Expansion provided enhanced recreational opportunities through the purchase of three picnic tables and five shade maple trees for the picnic area at the carnival grounds with \$3,000.

The Cambridge Springs Public Library expanded programming with \$600 to enhance community engagement with a t-shirt maker.

Common Roots used \$2000 to purchase lawnmowers and snowblowers that were used by members of their renters cooperative to maintain their residences.

Crawford Christian Academy enhanced their physical education program for grades 7-12 with \$2,000.

The Crawford County Historical Society used \$2,150 to host a program to train volunteers in proper conservation and cleaning procedures for headstones at regional cemeteries.

The Crawford County Mental Health Awareness Program used \$2,000 to reinvigorate the art program at Liberty House, their permanent supportive housing facility and program, with games, books, and electronics to further enhance the experience of their residents.



Crawford Heritage Community Foundation Unrestricted Fund

Beneficiary	Amount	Beneficiary	Amount
Academy Theatre Foundation.....	\$2,000	Northwest Pennsylvania Mobility Alliance.....	\$1,500
Cambridge Springs Public Library Association.....	\$600	Oil Region Alliance of Business, Industry and Tourism (ORA).....	\$2,200
Common Roots.....	\$2,000	Saegertown Area Library Association, Inc.....	\$580
Crawford Christian Academy.....	\$2,000	Saegertown Area Library Association, Inc.....	\$1,420
Crawford County Historical Society.....	\$2,150	Second Harvest Food Bank of Northwest Pennsylvania.....	\$2,500
Crawford County Mental Health Awareness Program.....	\$2,000	Second Saturday Community Market.....	\$800
Crawford County School for Adult Education.....	\$900	St. James Haven.....	\$1,300
CREATE - Cambridge Revitalization Economic and Tourism Expansion.....	\$3,000	Stone United Methodist Church.....	\$1,000
Family Services of NW PA.....	\$2,000	Tamarack Wildlife Center.....	\$1,400
Food Recovery Network.....	\$3,000	The Greater Titusville Development Foundation.....	\$2,500
Foundation for Sustainable Forests, Inc.....	\$1,500	Titusville Area Health Center Foundation.....	\$3,000
French Creek Council of Governments.....	\$3,000	Titusville Council on the Arts.....	\$1,000
French Creek Valley Christian Childcare.....	\$2,000	Titusville Historical Society.....	\$2,000
French Creek Valley Conservancy.....	\$2,400	Titusville Shade Tree Commission.....	\$502
Hatch Cemetery Association.....	\$460	Titusville Shade Tree Commission.....	\$898
Learning Center K-8 School.....	\$1,270	Unitarian Universalist Church of Meadville.....	\$2,000
Linesville Area Food Pantry, Inc.....	\$2,000	United Way of the Titusville Region.....	\$1,100
Linesville Community Public Library.....	\$1,500	United Way of the Titusville Region.....	\$900
Love in The Name of Christ.....	\$3,350	Venango Borough.....	\$1,500
Margaret Shontz Memorial Library.....	\$1,065	Venango Borough Council/Historical Committee.....	\$1,500
Meadville Area Free Clinic.....	\$14,000	Wesbury Foundation.....	\$2,300
Meadville Public Library.....	\$420	West Mead District #1 VFC.....	\$1,000
Meadville YMCA.....	\$2,000	Wildlife in Need Emergency Response of Pennsylvania, Inc.....	\$2,500
		Women's Services, Inc.....	\$620
		Young Men's Christian Association of Titusville.....	\$1,650

Giving Back (cont.)

The Crawford County School for Adult Education used \$900 for programming to help non-English speakers in their program to improve listening, reading, and writing skills through the exploration of local history and culture.

The Fairview/Fairmont Family Center received a grant of \$1,000 to help teach science, technology, engineering, and math skills to children enrolled in their afterschool program.

Family Services of NWPA utilized \$2,000 to expand a site-based Big Brothers Big Sisters project at the Meadville Public Library through volunteer recruitment and student support. The program furthered their mission to create and support mentoring relationships that ignite the power and promise of youth.

The Food Recovery Network supported a chapter at Allegheny College by covering the cost of individualized technical assistance, food recovery supplies, reusable food packaging materials, and other infrastructure investments to aid the students' efforts in mitigating food waste and increasing food access across the campus and community with \$3,000.

The Foundation for Sustainable Forests used \$3,000 to conserve 328 acres of forest in Crawford County to serve as ecological, recreational, and economic assets.

The French Creek Council of Governments used \$1,500 for a recycling event to ensure that waste tires were properly disposed of in an effort to maintain a cleaner local environment.

The French Creek Valley Christian School used \$2,000 to create separate play and eating areas for those enrolled in their childcare program. This provided an improved experience for the children and helped the school meet licensing requirements for the facility.

The French Creek Valley Conservancy reestablished a sustainable recreational path at their Smock Riverwalk property in Meadville's fifth ward with \$2,400.

The Greater Titusville Development Foundation transitioned two tennis courts at the Ed Meyer Complex into six outdoor pickle ball courts with \$2,500 to provide enhanced recreational opportunities to regional fanatics of the trendy sport.

Hatch Cemetery Association used \$460 to repair several tombstones from the 1800s in an effort to preserve history, honor those interred, and beautify the cemetery.

The Learning Center K-8 School improved student safety by upgrading the school's main entry door as well as installing cameras with \$1,270.

The Linesville Area Food Pantry used \$2,000 to provide high school students with the nutrition they need over the weekend through the backpack food program.

The Linesville Community Public Library improved the patron experience through improvements to the exterior with \$1,500.

Love, INC utilized \$3,350 to purchase nonperishable food and personal care items for high school students in need.



Giving Back (cont.)

The Margaret Shontz Memorial Library used \$1,065 to improve the reading skills of more than one hundred children during their annual summer reading program.

The Meadville Area Free Clinic provides healthcare at no cost to low- and moderate-income working people. An investment of \$14,000 was used to enhance clinic infrastructure in an effort to improve patient outcomes.

The Meadville Public Library used \$420 to purchase materials needed to help low-income people to complete their tax returns at no cost.

The Meadville YMCA used \$2,000 to host a poverty simulation training for childcare providers designed to provide a deeper understanding of the social determinants of health in order to build empathy and improve support for disadvantaged families.

The NWPA Mobility Alliance expanded operation for the CATA Go micro-transit service in Titusville with \$1,500 to ensure residents have access to reliable transportation on Saturdays.

The Oil Region Alliance of Business, Industry, and Tourism purchased an outdoor sign for the “Oil Region Cultural Preservation Center” located in the historic William H. Scheide House with \$2,200.

The Saegertown Area Library Association used \$2,000 to purchase a wagon, tent, table and children’s books to enhance their outreach at community events.

St. James Haven improved the health and comfort of guests by using \$1,300 to purchase a commercial dryer for the men’s homeless shelter.

The Second Harvest Food Bank of NWPA used \$2,500 to provide fresh produce and nutritious food to 200 households facing food insecurity in Crawford County on a monthly basis.

The Second Saturday Community Market purchased new signage with \$800 in an effort to increase awareness and patronage of participating crafters and artisans.

The Tamarack Wildlife Center created a safer and more defined parking lot and pathways with the purchase and installation of limestone gravel with \$1,400.

The Titusville Area Health Center used \$3,000 to renovate a new space and move the Oncology Department in order to provide patients with cancer treatment closer to home.

The Titusville Council of the Arts used \$1,000 for prizes, printing costs, and a guest speaker to promote participation in the Day of Poetry. The program seeks to improve literacy, creative expression, writing skills and appreciation for the poetic art form.



Giving Back (cont.)

The Titusville Historical Society researched, designed, and printed an art catalog based on the work of Titusville artist Martha Herpst with the assistance of \$2,000. The catalog aimed to document the artist's works and biography to educate about her impact.

The Titusville Shade Tree Commission planted three maple and three oak trees at Burgess Park and Robert's Grove with \$1,400 to improve the urban forest.

The Titusville YMCA used \$1,650 for facility upgrades including a water bottle filling station, baby changing stations, straight bar cable attachments, a TV, and digital signage player to promote programming.

Meadville 1825 is a year-long commemoration and exploration of seminal events in Meadville's history, including visits by the Marquis de Lafayette and John James Audubon, the founding of Stone Methodist and Christ Episcopal Churches, as well as the impact of John Brown, among other important events. Public programming was made available at no cost to participants with \$2,000.

The United Way of the Titusville Region used \$2,000 to provide scholarship assistance to the families of children aged three to five years old who needed help to cover the costs of preschool.

Venango Borough received \$1,500 for a sign for Karl Gerdon Park. The revitalized park provides recreational opportunities for all ages, including a playground, pickleball and basketball courts, a kayak launch on French Creek, and pavilion.

A committee of historic preservationists associated with **Venango Borough** used \$1,500 to conserve and display historic artifacts and photos related to the region in an effort to educate current and future generations.

The Wesbury Foundation enhanced the experience of residents of their Town Square location with \$2,300 to construct a gazebo for outdoor activities.

West Mead Volunteer Fire Department #1 upgraded their digital communication system to comply with requirements from the state and to improve emergency response with \$1,000.

Wildlife in Need Emergency Response used \$2,500 to purchase rescue equipment for the capture of injured bald eagles, waterfowl, and fox in order to safely transport them for treatment.

Women's Services, Inc used \$620 to purchase a color printer/copier and stand for their HOPE program. HOPE engages the participation of multiple generations within the Fifth Ward community in an effort to prevent and heal community-level trauma through health, opportunity, place-making, and engagement.



Scholarships



We direct funding from *Scholarship Funds* to select students meeting eligibility criteria (for example, financial need, field of study or academic merit) defined when the fund was established. Awards to 108 students totaled \$248,871.00 in 2024. We are a partner with the Pennsylvania Higher Education Assistance Agency (PHEAA) in the Partnerships for Access to Higher Education (PATH) Program. Through the PATH program, PHEAA potentially provides a match of scholarships awarded by the Foundation. To be eligible, students must be enrolled in a Pennsylvania college, be a state grant recipient and have additional unmet financial need. We leveraged matching funds for 30 students, representing thirty-five of our scholarships. Awards ranged between \$175 and \$3,500 and totaled \$43,605.00.

Associated Charities of Titusville Scholarship

Chloe Preston (Geneva College).....\$1,184

Harry Brown Scholarship Fund

Chloe Preston (Geneva College).....\$1,685

Ross R. and Shirley A. Casella Scholarship Fund

Sarah Cole (Duquesne University).....\$12,000
 Carly Fry (Penn State Behrend).....\$20,000
 Sophia Sampson (Penn State University).....\$20,000
 Emma Slocum (University of Pittsburgh at Bradford).....\$20,000
 Brooklyn Wakefield (Gannon University).....\$20,000
 Michaela Yoder (Ohio State University).....\$20,000

Cochranton Business and Professional Women's Scholarship

Alison Merritt (Mercyhurst University).....\$275

Cochranton Chapter of the National Honor Society Scholarship

Nathan Heim (Robert Morris University).....\$375

Cochranton High School Class of '55 Scholarship Fund

Nathan Heim (Robert Morris University).....\$3,500

Ronald J. Cummings Scholarship Fund

Olivia Kennedy (Penn State Behrend).....\$1,000

Clara H. and Robert M. Davidson Scholarship

Alexis Banner (PennWest Edinboro).....\$2,521
 Olivia Hironimus (University of Pittsburgh at Bradford).....\$1,847
 Chloe Preston (Geneva College).....\$1,847

Kenneth and Margaret Deane Scholarship

Myranda Findlay (Penn State Behrend).....\$1,000

R. Budd Dwyer Scholarship

Fayelynn McWright (Cleveland Institute of Art).....\$2,800

Richard T. Gill Memorial Scholarship

Ollivia Anthony (Cleveland Institute of Art).....\$450
 Parker Haun (Penn State University).....\$450

Orville and Louise Huber Memorial Scholarship

Hazel Peel (Penn State Behrend).....\$1,000

Elias W. and Mae Hasbrouck Hummer Memorial Scholarship

Hazel Peel (Penn State Behrend).....\$1,000

Ruby Marsh Eldred Scholarship Fund

Wyatt Barzak (Grove City College).....\$500
 Alexis Benson (Penn State Behrend).....\$500
 Jenna Bosco (Kent State University).....\$500
 Bailey N Clark (PennWest Edinboro).....\$300
 Braden Costello (Penn State Behrend).....\$500
 Alexis Doolittle (PennWest Clarion).....\$500
 Marlee Feather (West Virginia University).....\$500
 Marlea Ferguson (College for Creative Studies).....\$500
 Julianne Gowetski (John Carroll University).....\$500
 Collin Hearn (Seton Hill University).....\$500
 Julianna Jacobs (Grove City College).....\$500
 Ava Jones (University of Florida).....\$500
 Elizabeth Kellick (Penn State).....\$500
 Daniel Michaelson (PennWest Edinboro).....\$500
 Julia Mook (Miami University).....\$500
 Meaera Nystrom (Western Washington University).....\$500
 Laurynn Pelc (University of North Carolina Wilmington).....\$500
 Hayden Sanderson (Mercyhurst University).....\$500
 Madison Thomas (Baldwin Wallace University).....\$500
 Isabella Vennare (Baylor University).....\$500
 Kinsey Waite (Nova Southeastern University).....\$600
 Emily Wenko (University of Pittsburgh).....\$500
 Ella Worley (Allegheny College).....\$500



Nathan Heim receiving the Cochranton High School Class of '55 Scholarship

Scholarships

Greenleaf Scholarship

Lynna Brenizer (PennWest Edinboro).....	\$2,500
Slade Coleman (Lonestar College).....	\$1,000
Eva Dillaman (Allegheny College).....	\$3,000
Maxwell Dillaman (Mercyhurst University).....	\$2,500
Riley Fronce (St. Bonaventure University).....	\$2,500
Amber McConnell (Belmont University).....	\$2,500
Megan McConnell (Penn State University).....	\$2,500
Sara J. McConnell (US Naval Academy).....	\$3,000
Dustin Nearhoof (Regent University).....	\$3,000

Evelyn and Chalmer Jordan Scholarship

Lyndzee Amory (Theil College).....	
Samuel Draa (Theil College).....	\$3,000
Sadie Polach (Penn State).....	\$3,000
Nola Zook (Toccoa College).....	\$3,000

Jeremy J. Gebhart Scholarship

Maxwell Dillaman (Mercyhurst University).....	\$1,500
Nola Zook (Toccoa College).....	\$1,500

Friend and Bernice Kerr Scholarship

Maggie Beach (PennWest Clarion).....	\$2,500
Nathan Coldwell (Slippery Rock University).....	\$1,000
MacKenzie Covell (Penn State Behrend).....	\$2,000
Olivia Hironimus (Pitt Bradford).....	\$750
Callan Patterson (Allegheny College).....	\$2,500

Lee Ann Leech Memorial Scholarship

Nola Zook (Toccoa College).....	\$1,450
---------------------------------	---------

James E. Lewis Biology Scholarship

Nathan Heim (Robert Morris University).....	\$425
---	-------

Kenneth Lindberg Family Scholarship

Ryan Reichel (Penn State).....	\$473
--------------------------------	-------

Meadville Dr. Martin Luther King, Jr. Scholarship

Kayla Baker (University of Pittsburgh).....	\$3,500
Aubrey Decker (University of Pittsburgh).....	\$1,750
Lillian Groover (Theil College).....	\$2,000
Camryn Guffey (Slippery Rock University).....	\$1,750
Salomon Munoz (PennWest Edinboro).....	\$1,750
Luca White (Kent State).....	\$2,000

Janet and Blair McCurdy Scholarship

Ollivia Anthony (Cleveland Institute of Art).....	\$660
Hope Hollabaugh (PennWest Clarion).....	\$660
Elizabeth Hyatt (Miami University).....	\$660

Meadville Medical Center Medical Staff Memorial Scholarship

Alivia Kurelowech (Philadelphia College of Osteopathic Medicine).....	\$473
--	-------

Mark E. Mengel Scholarship

Sydney Holt (Penn State University).....	\$950
--	-------

F. Gregg Ney Scholarship

Lilia Douglas (PennWest Edinboro).....	\$1,430
Chelsey Freyeremuth (Grove City College).....	\$1,430

M. Lucille Runkel Nursing Scholarship

Carly Fry (Penn State Behrend).....	\$450
-------------------------------------	-------

Mark Jeffrey Sampson Memorial Scholarship

Brody Kinney (Erie Institute of Technology).....	\$2,865
Isabella Ongley (PennWest California).....	\$2,865

Sharp and Mary Proper Scholarship

Alexis Banner (PennWest Edinboro).....	\$1,300
Maggie Beach (PennWest Clarion).....	\$400
Mallory Cleland (PennWest Edinboro).....	\$1,200
Mackenzie Covell (Penn State Behrend).....	\$750
Cole Enright	\$400
Allison Jaco (PennWest Edinboro).....	\$2,500
Chloe Preston (Geneva College).....	\$250

Hetty Sherwin Scofield Scholarship

Brielle Cheney (Slippery Rock University).....	\$500
Elizabeth Hyatt (Miami University).....	\$500
Collin Jones (Florida State University).....	\$500
Isabella Linz (Carlow University).....	\$1,000
Ella Tautin (Theil College).....	\$500

Raymond Philip Shafer Foundation Scholarship

Luke Gosnell (Penn State University).....	\$762
---	-------

Gary M. Slezak Memorial Scholarship

Eli Bukoski (University of Akron).....	\$4,750
--	---------

BJ Smith Scholarship

Margaret Holmes (Marymount University).....	\$2,000
Brooke Kelley (Virginia Tech).....	\$2,000
Anna Sawford (Slippery Rock University).....	\$2,000
Garret Zug (Robert Morris University).....	\$2,000

Melanie Ann Snyder Scholarship

Mallory Cleland (PennWest Edinboro).....	\$1,800
Cole Enright (University of Pittsburgh at Bradford).....	\$450

Spencer Family Scholarship

Cassidy Boylan (Grove City College).....	\$750
Hunter Gould (Lock Haven University).....	\$2,000
Brady Greco (Slippery Rock University).....	\$500
Chae Kennedy (University of Alabama).....	\$700
Kaylee Mattera (Seton Hill University).....	\$500
Alison Merritt (Mercyhurst University).....	\$1,000
Robert Moats (PennWest Edinboro).....	\$450
Faith Peterson (PennWest Edinboro).....	\$500
Sadie Thomas (University of Mount Union).....	\$500
Bailey Varndell (Slippery Rock University).....	\$500

Scholarships



Abigail Mozina receiving the Sperry Ag Scholarship

Sperry Ag Scholarship

Abigail Mozina (University of Findlay).....\$1,425

Ted Stake Scholarship

Chae Kennedy (University of Alabama)..... \$245

Uhlen Animal Sciences Scholarship

Jenna Bosco (Kent State University).....\$5,800

Abigail Weagraff (University of Findlay).....\$12,000

Thomas M. Watson Memorial Scholarship

Abigail Weagraff (University of Findlay).....\$1,650

Evelyn M. Wood Scholarship

Braden Costello (Penn State Behrend)..... \$287

Harold and Genevieve Zemlansky Scholarship

Kylee Miller (Slippery Rock University).....\$1,975

Claire Mumford (Liberty University).....\$1,975

Ross R. and Shirley A. Casella Scholarship Fund

Established to honor the legacy of Ross R. and Shirley A. Casella, this scholarship fund provides annual support to students pursuing higher education. Scholarships are awarded to one or more graduates from Titusville Area School District (Titusville, PA), Dover or New Philadelphia High School (Ohio), or St. Joseph Catholic Elementary School (New Philadelphia, OH) who are enrolling in an accredited four-year college or university.



The Casella Scholarship reflects the donors' enduring belief in the power of education to transform lives and strengthen communities.



Strengthening Nonprofits, Strengthening Communities

At the Crawford Heritage Community Foundation, we believe that when nonprofits thrive, communities do too. That's why we go beyond grantmaking to invest in nonprofit capacity building, providing the tools, training, and support organizations need to grow stronger, more effective, and more sustainable.

As a community foundation, we are uniquely positioned to support local nonprofits through:

- Grant funding for both projects and infrastructure
- Workshops and trainings on topics like social media, fundraising, and planning
- Shared resources like meeting space, technology, and collaboration opportunities
- Technical assistance and connections to regional partners



We are thrilled to report that the sixth annual *Crawford Gives* on August 24-27, 2024 was a huge success. It was a significant milestone in our effort to build our region's culture of philanthropy.

We worked with 179 charitable organizations that serve our region. Each participating organization created a profile on the web site, to communicate their impact to current and prospective donors. Over the course of ninety-six hours, 1,824 unique donors from across the country made gifts totaling \$912,174.20. Each participating organization received a gift from an average of 28 donors and each gift averaged \$170.00.

Through the generosity of Shafer Law Firm, Allegheny Realty Settlement, Palmiero Toyota, Armstrong, and anonymous donors, a gift matching pool was established with \$44,204.68. Every organization received an additional 6 cents for every dollar given.

We are deeply grateful for the outpouring of enthusiasm and generosity from our donors and the hard work put in by the participating organizations! The seventh Annual Crawford Gives will take place over ninety-six hours from Tuesday, August 12 through Friday, August 15.

Academy Theatre	\$51,169.18	CARE [Cochranton Area Redevelopment Effort, Inc.]	\$12,475.96
ACES - PA Business Week	\$718.25	Center for Family Services, Inc.	\$25,643.01
Active Aging Foundation	\$11,316.21	CHAPS	\$4,606.61
All God's Children Ministries	\$1,433.96	Child Development Centers, Inc.	\$331.17
American Cancer Society, Inc.	\$894.59	Child to Family Connections	\$1,679.02
Angie Tartaglione Lewis and Paul Lewis Scholarship Fund	\$200.00	Cochranton Area Public Library	\$2,169.87
ANNA Shelter	\$3,335.85	Common Grounds	\$7,670.97
Arc of Crawford County, Inc.	\$2,585.66	Common Roots	\$26,736.39
Associated Charities of Titusville	\$1,272.40	Community Services of Venango County Inc. (CSVC)	\$51.57
Auberle Crawford County Independent Living Program	\$77.36	Conneaut Boys Lacrosse	\$15.51
Beautiful Balance Inspirations	\$691.93	Conneaut Eagles Foundation	\$1,702.90
Because You Care	\$2,507.24	Conneaut Lake Aquatic Management Association (CLAMA)	\$10,048.88
Benson Memorial Library	\$1,807.12	Conneaut Lake Area Historical Society	\$7,973.41
Bethesda Lutheran Services	\$2,796.81	Conneaut Lake Volunteer Fire Department	\$611.10
Blooming Valley Cemetery	\$469.76	Conneaut Valley Area Historical Society	\$2,133.43
Blooming Valley Volunteer Fire Department	\$1,291.83	Conneaut Valley Elementary PTO	\$241.75
Boosters of Camp Cadet	\$51.81	Conneaut Valley Food Pantry, INC	\$541.30
Boy Scouts of America - French Creek Council	\$1,410.22	Crawford Christian Academy	\$18,159.88
Bridge Studios	\$1,146.61	Crawford County CASA, Inc.	\$7,545.55
Cambridge Revitalization Economic and Tourism Expansion (CREATE)	\$3,288.76	Crawford County Drug & Alcohol Executive Commission, INC	\$570.27
Cambridge Springs Heritage Society	\$2,437.29	Crawford County Historical Society	\$23,036.59
Cambridge Springs Public Library	\$3,308.87	Crawford County Humane Society	\$9,054.93
Cambridge Springs Trolley Station	\$6146.40	Crawford County K-12 Education Alliance (Meadville Chamber Foundation)	\$1,373.32
Cambridge Upper Cemetery Association	\$315.10	Crawford County School for Adult Education	\$2,190.46
Canine Partners Program Inc.	\$2,021.08	Crawford Heritage Community Foundation	\$22,633.93

Crawford Gives (cont.)

Creating Landscapes	\$8,139.58	
Dave & Opey Thomas Double Sock Scholarship Fund	\$505.56	
Dicksonburg Cemetery Association	\$307.57	
Dr. Martin Luther King, Jr. Scholarship Fund	\$10,654.14	
Edinboro University Foundation	\$1,583.99	
Education & Training Center at Pitt-Titusville	\$180.50	
EHCA Crawford County (EHCA Foundation)	\$1,072.27	
EmergyCare	\$462.33	
ERNST TRAIL-French Creek Recreational Trails, Inc.	\$15,337.78	
EUMA	\$7,655.50	
Fallowfield Fire and Rescue	\$36.12	
Family Services of NW PA	\$1,077.24	
Family, Children & Community Association (FCCA)	\$8,947.28	
Foundation for Sustainable Forests	\$28,760.87	
French Creek Community Theatre	\$3,562.22	
French Creek Valley Christian School, Inc.	\$294.55	
French Creek Valley Conservancy	\$12,265.25	
French Creek Valley Mid East Little League	\$15.51	
French Creek Valley Railroad Historical Society	\$10,371.75	
Friends of Drake Well	\$1,701.77	
Greater Titusville Development Foundation	\$541.11	
Green Frog Studio	\$704.41	
Greendale Cemetery Association	\$9,938.77	
Hatch Cemetery Association	\$3,420.33	
His Work His Way	\$9,803.94	
Hog Heaven Rescue Farm	\$902.57	
Hospice of Crawford County	\$7,526.81	
House of Hope (CIHR)	\$1,632.74	
Hunters Sharing the Harvest	\$390.26	
Johnson-Shaw Stereoscopic Museum	\$10,700.09	
Junior Achievement of Western PA, Northwest Region	\$128.15	
Kerrtown Community Center (VRDA)	\$816.78	
Keystone Blind Association	\$70.61	
Lake Canadohta Historical Society	\$1,026.32	
Learning Center K-8 School	\$12,225.18	
Linesville Community Public Library	\$2,233.39	
Linked by Pink	\$25.79	
Love in the Name of Christ of Titusville	\$4,743.95	
Meadville Area Free Clinic	\$10,319.96	
Meadville Area Recreation Foundation	\$41,276.00	
Meadville Area Youth Baseball and Softball	\$1,065.89	
Meadville Bikeshare (NW PA Mobility Alliance)	\$611.83	
Meadville Children's Center	\$1,958.81	
Meadville Community Soup Kitchen	\$8,384.91	
Meadville Community Theatre	\$8,733.40	
Meadville Cooperative Preschool	\$2,723.70	
Meadville Council on the Arts	\$2,488.14	
Meadville Family YMCA	\$15,703.46	
Meadville Market House (Friends of the Market House)	\$10,962.12	
Meadville Medical Center Foundation	\$27,322.04	
Meadville Neighborhood Center	\$1,059.10	
Meadville Public Library	\$19,829.01	
Meadville Summer Parks Program	\$1,341.46	
Member to Member, Inc. (Northwestern Rural Electric Cooperative)	\$361.13	
Men of Grace Allegheny Region	\$175.00	
Neason Hill Elementary PTO	\$507.90	
Northern Pennsylvania Regional College	\$51.52	
Northwest Pennsylvania K9 Search and Rescue	\$1,044.04	
Northwestern Legal Services	\$30.95	
Not One More, Northwest Pennsylvania	\$2,158.23	
NWPA NTMA Education Foundation	\$9,847.04	
Oil Creek Railway Historical Society (Oil Creek & Titusville Railroad)	\$2,127.33	
Oil Region Alliance of Business, Industry & Tourism	\$699.81	
Oil Region Ballet	\$2,548.21	
PA Stitchers of Valor (Quilts of Valor Foundation)	\$1,544.81	
Pennsylvania Equality Project	\$495.39	
Pregnancy Center of Meadville	\$10,588.38	
Pymatuning Lake Association	\$446.52	
R. Budd Dwyer Scholarship Fund	\$150	
Rometown Academy	\$623.25	
Roots of NW Pennsylvania Inc	\$356.46	
Saegertown Area Library	\$9891.9	
Saegertown Heritage Society	\$2,447.86	
Saegertown High School Alumni Association, Inc.	\$1,169.12	
Saegertown Volunteer Fire Department	\$5,333.79	
Samaritans of the Conneaut Lake Area	\$805.26	
Saving Shepherds Rescue, Inc.	\$2,431.56	
Second District PTO	\$695.57	
Second Harvest Food Bank of NWPA	\$7,024.19	
Self Advocates United as 1, Inc.	\$237.57	
Seton Catholic School	\$7,993.98	
Shade Tree Commission - City of Meadville	\$1,182.74	
Shontz Memorial Library - Conneaut Lake Public Library	\$6,067.61	
Sippy Historic Machine Shop (Greater Meadville Tooling Center)	\$5,395.82	
SLURP - Strays Love Us Rescue Program	\$787.02	
Social Connection	\$92.83	
South Lake Preserve	\$956.19	



Crawford Gives (cont.)

Spartansburg Community Foundation	\$651.81
Spartansburg Events	\$50.00
Special Olympics Pennsylvania (Team Crawford)	\$1,317.15
Springboro Public Library	\$3,763.26
St. James Haven	\$7,736.55
Stone Memorial Library	\$1,966.75
T and S Second Chance Home	\$478.92
Tamarack Wildlife Center	\$14,573.77
Timber Ridge Child Care Center	\$301.56
Titusville Alumni Association	\$2,144.53
Titusville Area Food Bank	\$1,232.04
Titusville Area Health Center Foundation - Titusville Area Hospital	\$2,386.39
Titusville Council on the Arts	\$940.13
Titusville Fund of the Crawford Heritage Community Foundation	\$612.53
Titusville Historical Society	\$4,311.57
Titusville Regional Literacy Council	\$768.06
Titusville Renaissance, Inc.	\$489.85
Titusville Senior Center (TASCC)	\$383.49
Titusville Woodlawn Corporation	\$1,331.36
Titusville YMCA	\$23,308.85
Touch-Stones Solutions, Inc.	\$914.70
Toys for Tots (Marine Corps Reserve Toys for Tots)	\$1,080.90
Trees of Christmas- Meadville Garden Club	\$2,423.30
United Community Independence Programs, Inc	\$518.62
United Way of the Titusville Region	\$1,074.00
United Way of Western Crawford County, Inc.	\$6,282.70
Unsigned Santa, Inc.	\$1,354.45
Venango Volunteer Fire Department	\$1,227.84
Vernon Central Hose Company	\$3,183.76
Wesbury	\$39,255.26
West End Elementary School PTO	\$1,037.56
West Mead Township District #1 Volunteer Fire Company, Inc.	\$1,566.62
Wildlife in Need Emergency Response of Pennsylvania	\$3,903.67
WiNS Project (Second Harvest Food Bank of NW PA)	\$13,908.64
Women's Services, Inc.	\$21,405.44
WQLN - PBS and NPR (WQLN Public Media)	\$5,446.94
WXCS 92.9 FM (Cambridge Springs Radio)	\$730.24
YELOnline Initiative, Inc.	\$937.38
You Matter Foundation, Inc.	\$1,981.00
Youth Connection- FSCAS	\$283.60
Youth Vision, Inc	\$2,301.81
YWCA of Titusville	\$4,978.34



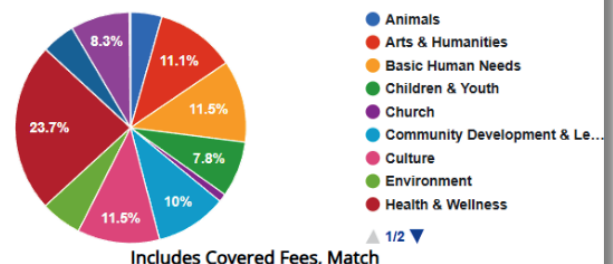
Benjamin Franklin's foresight and generosity are an example to us all. He left instructions in his will for a gift of \$5,000 (more than \$120,000 in today's dollars) that was to be invested for 200 years. At the end of that period he directed that the money be used to benefit residents of the Commonwealth of Pennsylvania and the City of Philadelphia.

In 1991, a portion of the \$2 million that had accrued was distributed to Pennsylvania's community foundations.

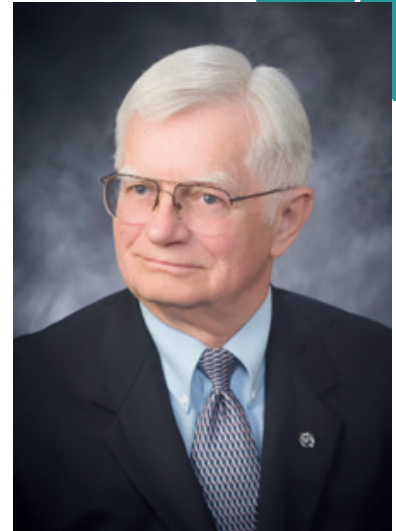
We continue to invest a small portion of Mr. Franklin's money (*Ben Franklin Trust*) and distribute a percentage each year as discretionary grants to benefit programs serving Crawford County.

Contact us for more information about leaving your own legacy.

Total Dollars by Category



Dwight Haas Bequest Society



The *Dwight Haas Bequest Society* honors those people who have included the Crawford Heritage Community Foundation as a beneficiary in their estate plan.

Planned gifts from an estate may be directed towards one of our current beneficiary organizations or funds, or can be used to establish a new fund for nearly any charitable purpose you wish. You can support organizations operating here, any part of the United States, and in some cases, international charitable programs. A minimum gift amount is not required. However, at least \$5,000 is needed to establish a new fund.

We don't require you to tell us the amount of your gift. But, if you plan to start a new fund, we encourage you to discuss the details with us to ensure that we can comply with your wishes. Charitable bequests are typically included as provisions in a will, but there are other options. You can also make the Foundation the beneficiary (in whole or in part) of an insurance policy, charitable trust, individual retirement account (IRA) or 401K.

To join, simply notify us in writing of your intent. We provide a confidential statement of intent form for this purpose. Your planned gift may be altered at any time.

We recommend that you discuss a planned gift with us and a financial and legal advisor to ensure that it meets your needs while it benefits the community. Contact us to discuss how we can assist you in achieving your philanthropic goals.

The bequest society is named in honor of Dwight Haas, retired Executive Director of the United Way of Western Crawford County. Dwight came to our community from Dayton, Ohio, where they have had a community foundation since 1921. He thought it essential that one be created here. After his retirement, Dwight spurred the effort to establish the foundation and served on our Board of Directors for fourteen years.

Bequest Society Members

Anonymous	Jeanette deHaven	John K. Hodges	Edward L. Mengel	Jean L. Randall
Brian D. Bair	Ilabelle Detweiler	Paul L. Huber	Carol Mengel	James Sagan
Mary Beth Bair	Richard R. Eakin	Frances Huber	Gordon R. Miller	Diane Sagan
Bronwell Bond	Dianne M. Eakin	John Klinginsmith	Keith Mink	Donald E. Snyder
Tim Brady	Edward P. Edinger	Christine B. Lang	Debbie Mink	John Sperry
Huntington Christie	Doris M. Edinger	Lester L. Lenhart	Shawn Naples	Jody Sperry
Barry Cressman	Adrienne L. Geddes	Kenneth Lindberg	Dr. John B. Nesbitt	Margaret A. Stadtler
Lynn Cressman	Liana L. Gray	Judy Lindberg	Lucy Nesbitt	Clyde Walton
Edward Cronin	Janet Haas	Christian M. Maher	Robert P. Peterson	Marie Walton
Suann Cronin	Jonathan Helmreich	Lawrence Mencotti	Cheryl A. Peterson	Paulette Widmann
Dirk Cummings	Nancy Helmreich	Melissa Mencotti	Nancy Price	

Contact Us

Crawford



COMMUNITY FOUNDATION

A Strong Foundation
For A Better
Community



P.O. Box 933
Meadville, PA 16335



814-336-5206



executive@crawfordheritage.org



www.crawfordheritage.org

Board of Directors

Barry Cressman, President
Dave Galey, First Vice President
Bobbi Jo Deane DeCrapio, Second Vice President
Jennifer Mohtashemi, Third Vice President
Luke Ruot, Secretary
Nancy Henry Worman, Treasurer

Directors

Terry Funk
Paul Huber
Diane Robbins
Susan Trucco
Peter White, MD
Lisa Pepicelli Youngs, Esq.

Directors Emeritus

Robert S. Bailey
Kelly Brocious
Greg Bush
Judy Griffin
John K. Hodges
Christopher A. Junker, Esq.
Jeffrey S. Lang
Christine B. (Kit) Lang
Ken Lindberg
Milosh Mamula
Melissa Mencotti
Stephen P. Mizner
Saundra (Sandee) Mook
Ken Montag
John Nesbitt, MD
Samuel Spencer
Mark Strausbaugh, CPA
Carl Terry
Earl Yingling